

# **TT BIÊN HÒA - SÂN TENNIS**

THIẾT KẾ CHIẾU SÁNG SÂN TENNIS ĐƠN SỬ DỤNG ĐÈN LED POTECH 600W

Partner for Contact: Võ Xuân Ngọc Thảo  
Order No.:  
Company: Wattens  
Customer No.:

Date: 26.10.2020  
Operator: BUI CONG CUONG

POTECH POWER TECHNOLOGY LIMITED COMPANY

350/33/10/9B Quốc lộ 1, Khu phố 4, P. An Phú Đông, Q. 12, Tp. Hồ Chí Minh

Operator BUI CONG CUONG  
 Telephone 0933207899  
 Fax  
 e-Mail potechled@gmail.com

## Table of contents

### TT BIÊN HÒA - SÂN TENNIS

Project Cover	1
Table of contents	2
<b>POTECH / S26-101017 / 600W LED LIGHTING FOR TENNIS / PT-TN-600</b>	
Luminaire Data Sheet	3
<b>Exterior Scene 1</b>	
Planning data	4
Luminaire parts list	5
Sport Sites (layout plan)	6
3D Rendering	7
False Colour Rendering	8
<b>Exterior Surfaces</b>	
<b>Ground Element 1</b>	
<b>Surface 1</b>	
Isolines (E)	9
<b>Tennis 1 Calculation Grid (PA)</b>	
Summary	10
Isolines (E, Perpendicular)	11
Value Chart (E, Perpendicular)	12
<b>Calculation Grid 1</b>	
Summary	13
Isolines (E, Perpendicular)	14
Value Chart (E, Perpendicular)	15

POTECH POWER TECHNOLOGY LIMITED COMPANY

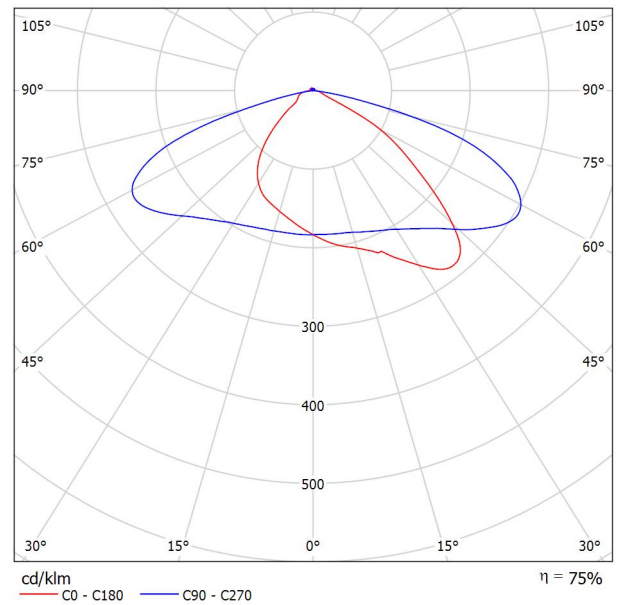
350/33/10/9B Quốc lộ 1, Khu phố 4, P. An Phú Đông, Q. 12, Tp. Hồ Chí Minh

Operator BUI CONG CUONG  
Telephone 0933207899  
Fax  
e-Mail potechled@gmail.com

## POTECH / S26-101017 / 600W LED LIGHTING FOR TENNIS / PT-TN-600 / Luminaire Data Sheet

See our luminaire catalog for an image of the luminaire.

Luminous emittance 1:



Luminaire classification according to CIE: 98  
CIE flux code: 41 79 97 98 75

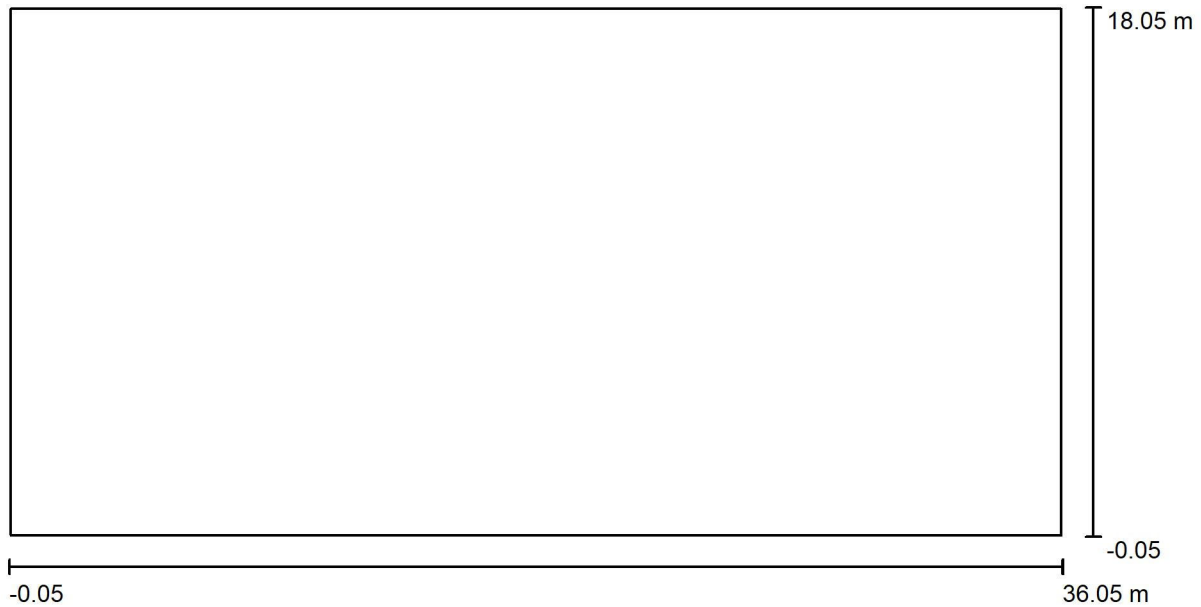
Due to missing symmetry properties, no UGR table can be displayed for this luminaire.

POTECH POWER TECHNOLOGY LIMITED COMPANY

350/33/10/9B Quốc lộ 1, Khu phố 4, P. An Phú Đông, Q. 12, Tp. Hồ Chí Minh

Operator BUI CONG CUONG  
Telephone 0933207899  
Fax  
e-Mail potechled@gmail.com

## Exterior Scene 1 / Planning data



Maintenance factor: 0.80, ULR (Upward Light Ratio): 2.0%

Scale 1:259

### Luminaire Parts List

No.	Pieces	Designation (Correction Factor)	Φ (Luminaire) [lm]	Φ (Lamps) [lm]	P [W]
1	8	POTECH / S26-101017 / 600W LED LIGHTING FOR TENNIS / PT-TN-600 (1.000)	72288	96000	600.0
Total:			578303	768000	4800.0

POTECH POWER TECHNOLOGY LIMITED COMPANY

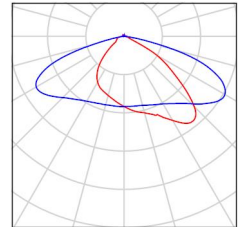
350/33/10/9B Quốc lộ 1, Khu phố 4, P. An Phú Đông, Q. 12, Tp. Hồ Chí Minh

Operator BUI CONG CUONG  
Telephone 0933207899  
Fax  
e-Mail potechled@gmail.com

## Exterior Scene 1 / Luminaire parts list

8 Pieces POTECH / S26-101017 / 600W LED LIGHTING FOR TENNIS / PT-TN-600  
Article No.: / S26-101017 /  
Luminous flux (Luminaire): 72288 lm  
Luminous flux (Lamps): 96000 lm  
Luminaire Wattage: 600.0 W  
Luminaire classification according to CIE: 98  
CIE flux code: 41 79 97 98 75  
Fitting: 672 x SMD 3030 (Correction Factor 1.000).

See our luminaire catalog for an image of the luminaire.



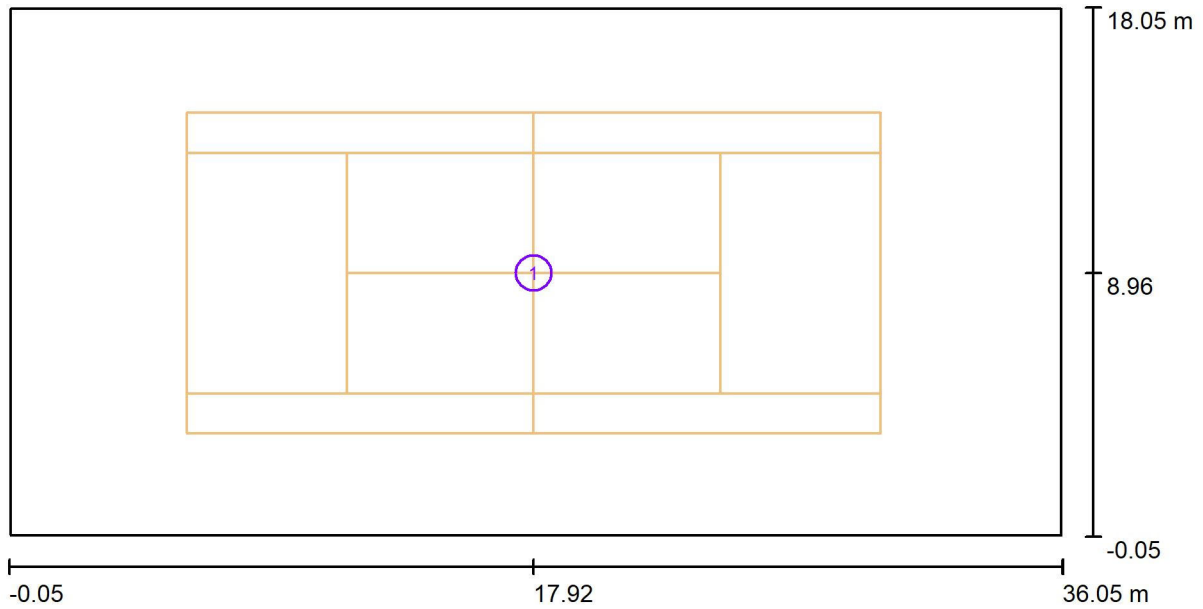


POTECH POWER TECHNOLOGY LIMITED COMPANY

350/33/10/9B Quốc lộ 1, Khu phố 4, P. An Phú Đông, Q. 12, Tp. Hồ Chí Minh

Operator BUI CONG CUONG  
Telephone 0933207899  
Fax  
e-Mail potechled@gmail.com

### Exterior Scene 1 / Sport Sites (layout plan)



Scale 1 : 259

#### Sport Site Parts List

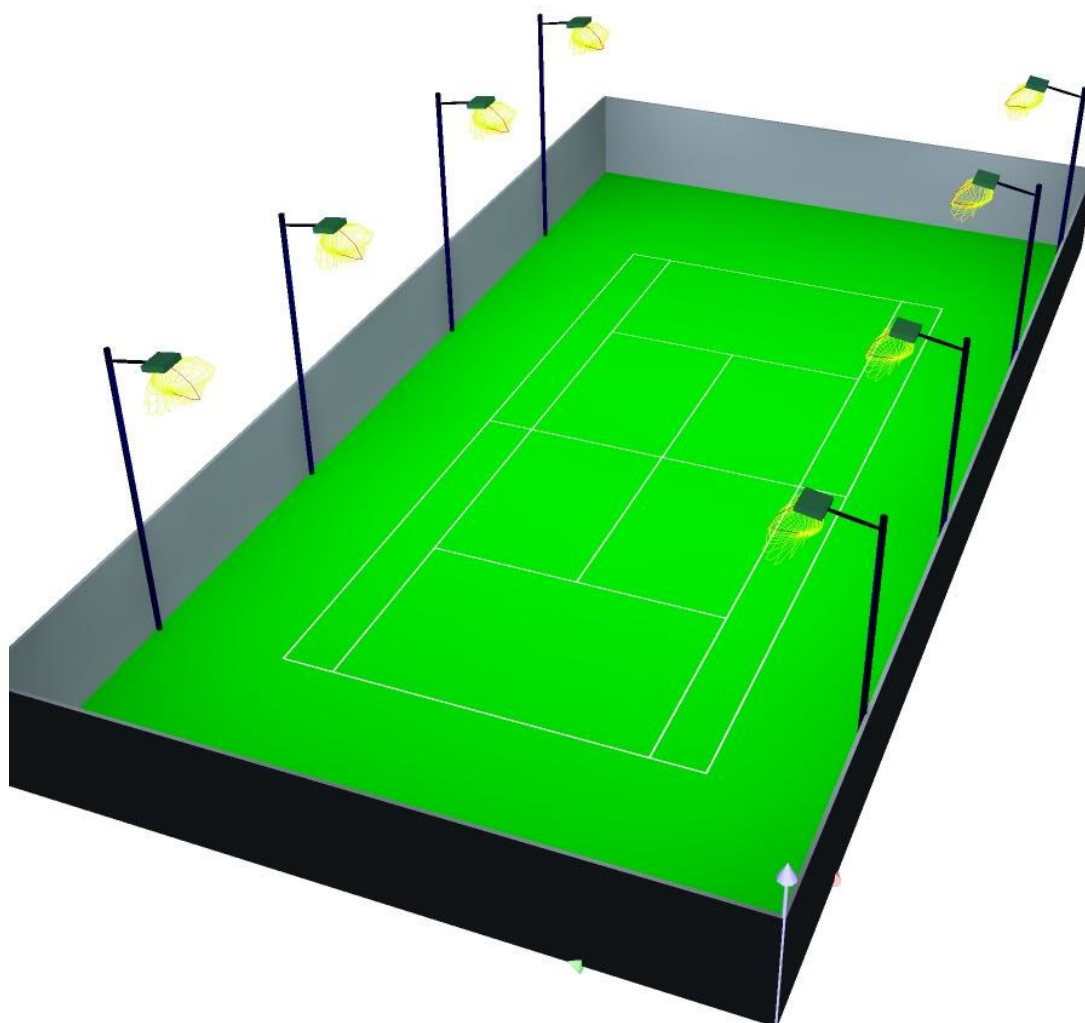
No.	Pieces	Designation
1	1	Tennis

POTECH POWER TECHNOLOGY LIMITED COMPANY

350/33/10/9B Quốc lộ 1, Khu phố 4, P. An Phú Đông, Q. 12, Tp. Hồ Chí Minh

Operator BUI CONG CUONG  
Telephone 0933207899  
Fax  
e-Mail potechled@gmail.com

## Exterior Scene 1 / 3D Rendering



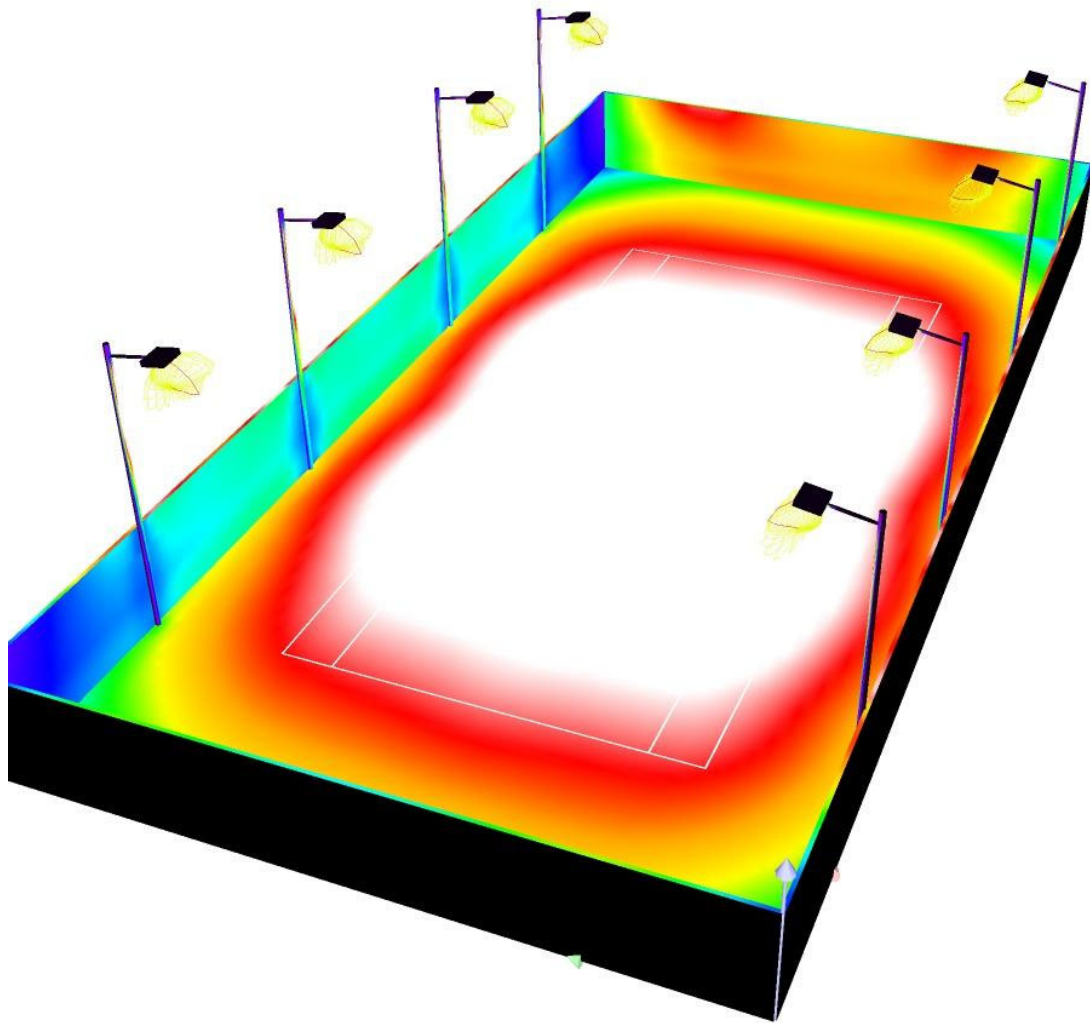


POTECH POWER TECHNOLOGY LIMITED COMPANY

350/33/10/9B Quốc lộ 1, Khu phố 4, P. An Phú Đông, Q. 12, Tp. Hồ Chí Minh

Operator BUI CONG CUONG  
Telephone 0933207899  
Fax  
e-Mail potechled@gmail.com

### Exterior Scene 1 / False Colour Rendering



0      62.50      125      187.50      250      312.50      375      437.50      500

lx



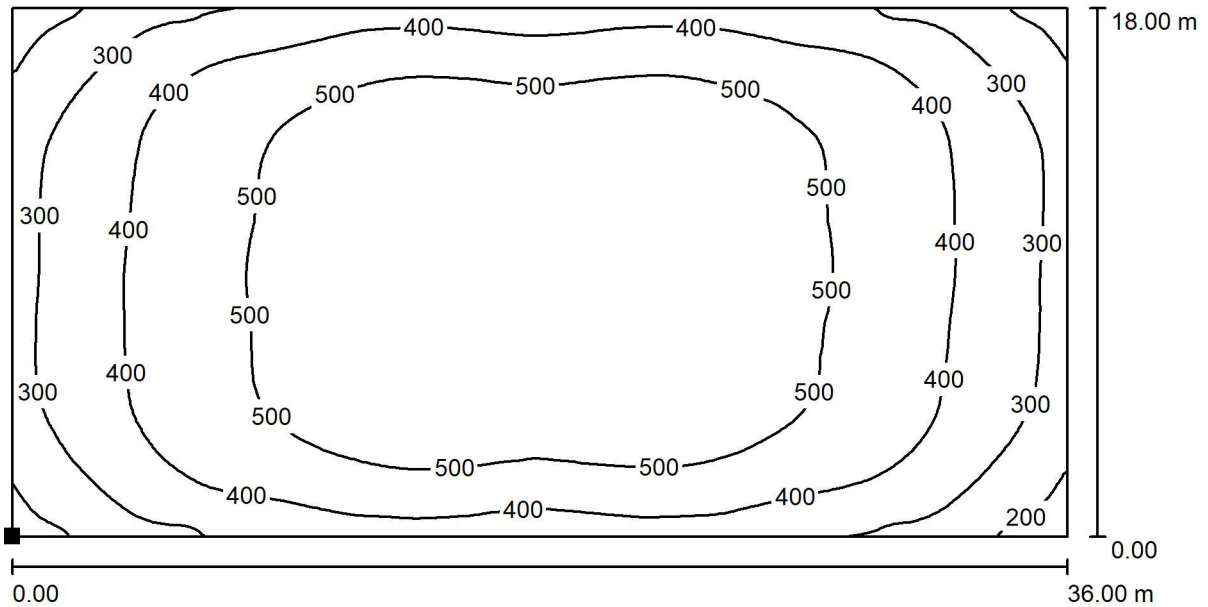


POTECH POWER TECHNOLOGY LIMITED COMPANY

350/33/10/9B Quốc lộ 1, Khu phố 4, P. An Phú Đông, Q. 12, Tp. Hồ Chí Minh

Operator BUI CONG CUONG  
Telephone 0933207899  
Fax  
e-Mail potechled@gmail.com

**Exterior Scene 1 / Ground Element 1 / Surface 1 / Isolines (E)**



Values in Lux, Scale 1 : 258

Position of surface in external scene:  
Marked point:  
(0.000 m, 0.000 m, 0.000 m)



Grid: 128 x 128 Points

$E_{av}$  [lx]  
444

$E_{min}$  [lx]  
133

$E_{max}$  [lx]  
585

$u_0$   
0.300

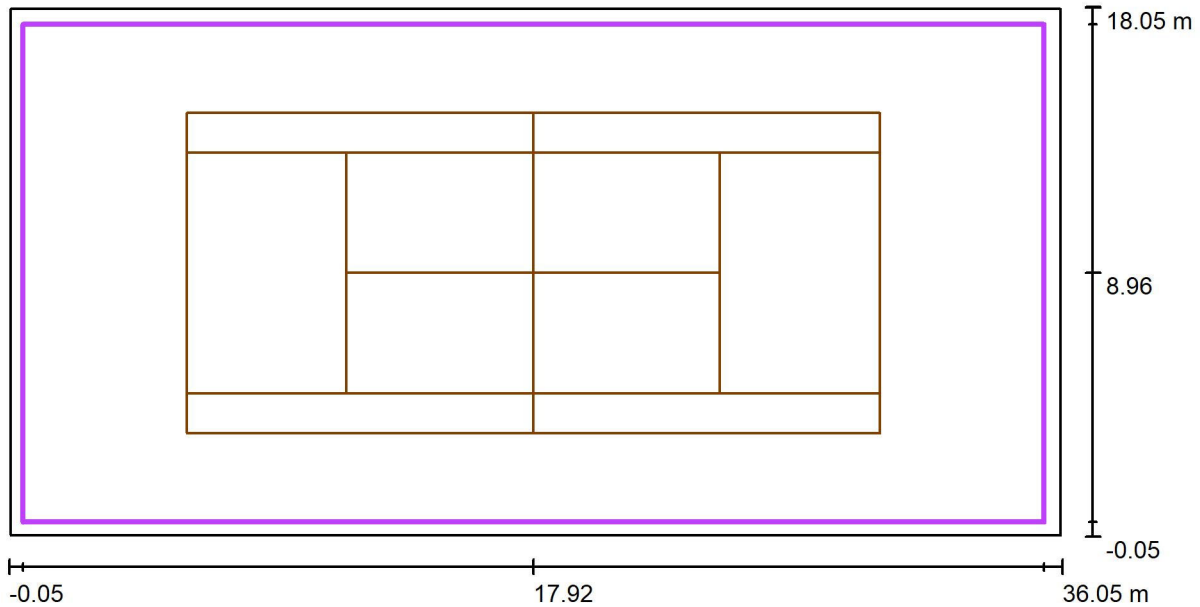
$E_{min} / E_{max}$   
0.228

POTECH POWER TECHNOLOGY LIMITED COMPANY

350/33/10/9B Quốc lộ 1, Khu phố 4, P. An Phú Đông, Q. 12, Tp. Hồ Chí Minh

Operator BUI CONG CUONG  
Telephone 0933207899  
Fax  
e-Mail potechled@gmail.com

### Exterior Scene 1 / Tennis 1 Calculation Grid (PA) / Summary



Scale 1 : 259

Position: (17.920 m, 8.960 m, 0.000 m)  
Size: (35.000 m, 17.000 m)  
Rotation: (0.0°, 0.0°, 0.0°)  
Type: Normal, Grid: 15 x 7 Points  
Belongs to the following sport arena: Tennis 1

#### Results overview

No.	Type	$E_{av}$ [lx]	$E_{min}$ [lx]	$E_{max}$ [lx]	$u0$	$E_{min} / E_{max}$	$E_{h\ m} / E_m$	H [m]	Camera
1	perpendicular	462	245	581	0.53	0.42	/	0.000	/

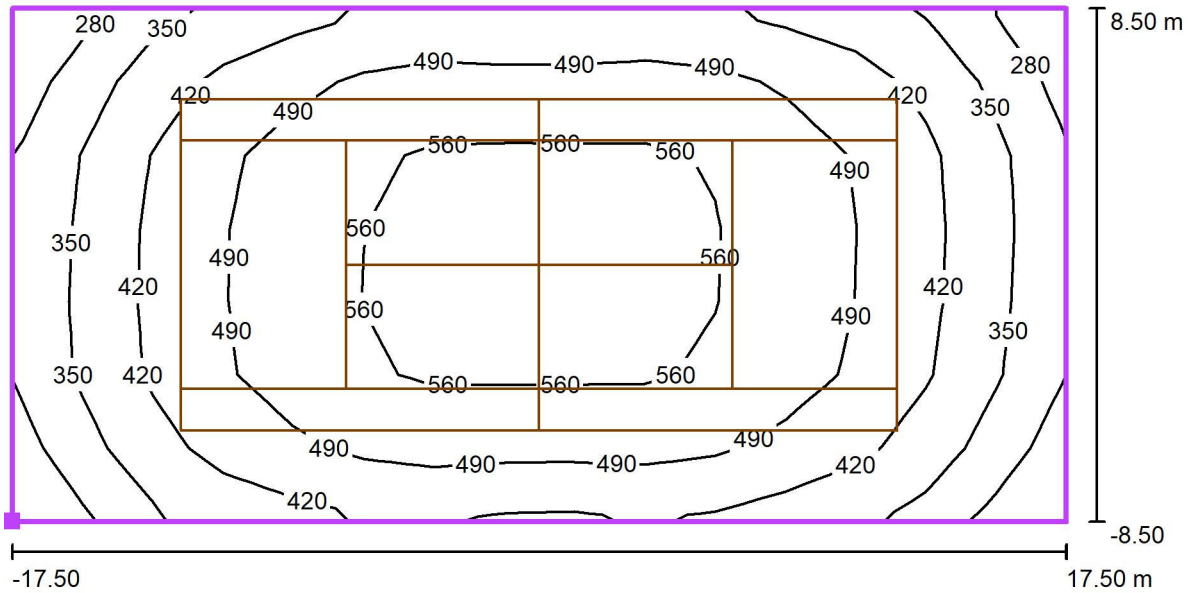
$E_{h\ m} / E_m$  = Relationship between middle horizontal and vertical illuminance, H = Measuring Height

POTECH POWER TECHNOLOGY LIMITED COMPANY

350/33/10/9B Quốc lộ 1, Khu phố 4, P. An Phú Đông, Q. 12, Tp. Hồ Chí Minh

Operator BUI CONG CUONG  
Telephone 0933207899  
Fax  
e-Mail potechled@gmail.com

**Exterior Scene 1 / Tennis 1 Calculation Grid (PA) / Isolines (E, Perpendicular)**



Values in Lux, Scale 1 : 251

Position of surface in external scene:  
Marked point: (0.420 m, 0.460 m, 0.000 m)



Grid: 15 x 7 Points

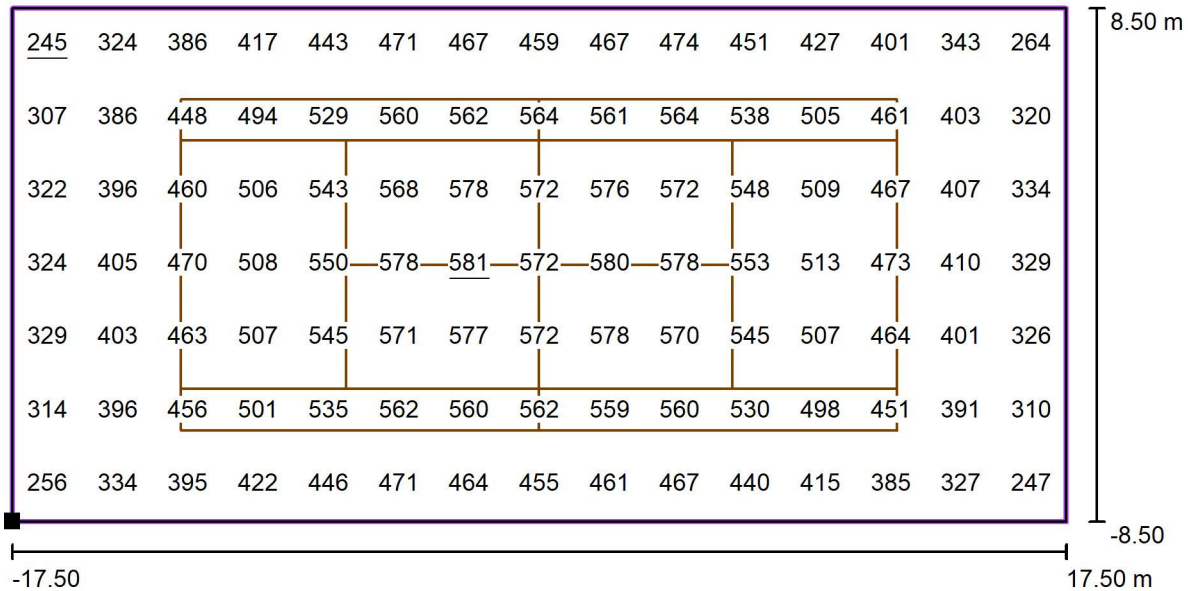
$E_{av}$ [lx]	$E_{min}$ [lx]	$E_{max}$ [lx]	$u_0$	$E_{min} / E_{max}$
462	245	581	0.53	0.42

POTECH POWER TECHNOLOGY LIMITED COMPANY

350/33/10/9B Quốc lộ 1, Khu phố 4, P. An Phú Đông, Q. 12, Tp. Hồ Chí Minh

Operator BUI CONG CUONG  
Telephone 0933207899  
Fax  
e-Mail potechled@gmail.com

### Exterior Scene 1 / Tennis 1 Calculation Grid (PA) / Value Chart (E, Perpendicular)



Values in Lux, Scale 1 : 251

Position of surface in external scene:

Marked point: (0.420 m, 0.460 m, 0.000 m)



Grid: 15 x 7 Points

$E_{av}$  [lx]  
462

$E_{min}$  [lx]  
245

$E_{max}$  [lx]  
581

$u_0$   
0.53

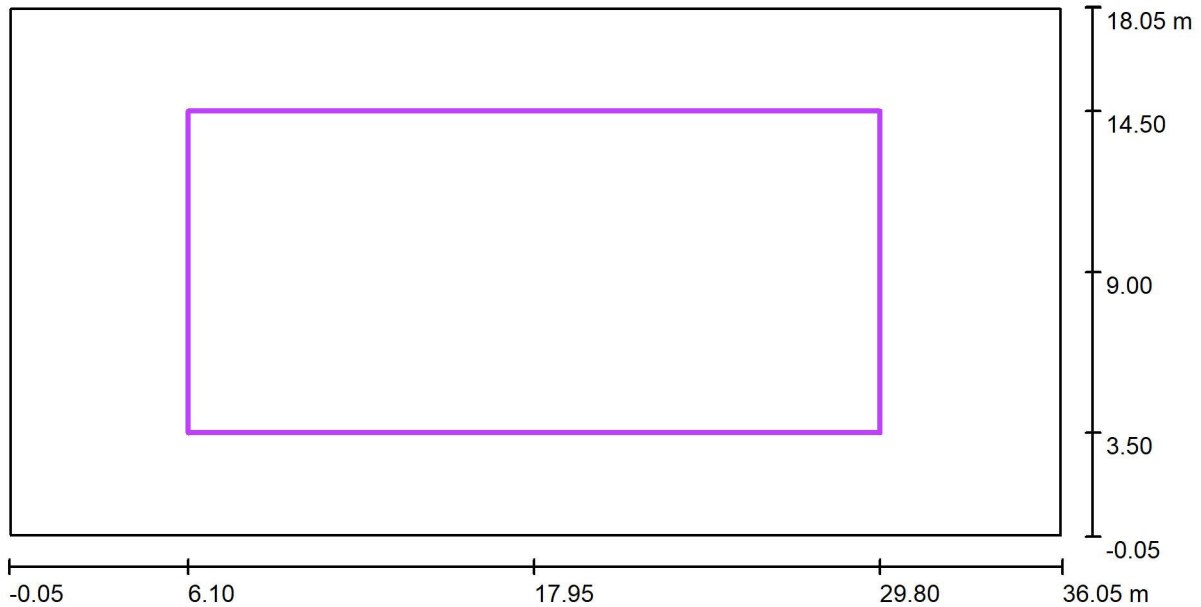
$E_{min} / E_{max}$   
0.42

POTECH POWER TECHNOLOGY LIMITED COMPANY

350/33/10/9B Quốc lộ 1, Khu phố 4, P. An Phú Đông, Q. 12, Tp. Hồ Chí Minh

Operator BUI CONG CUONG  
Telephone 0933207899  
Fax  
e-Mail potechled@gmail.com

### Exterior Scene 1 / Calculation Grid 1 / Summary



Scale 1 : 259

Position: (17.950 m, 9.000 m, 0.000 m)  
Size: (23.700 m, 11.000 m)  
Rotation: (0.0°, 0.0°, 0.0°)  
Type: Normal, Grid: 13 x 7 Points

#### Results overview

No.	Type	$E_{av}$ [lx]	$E_{min}$ [lx]	$E_{max}$ [lx]	$u0$	$E_{min} / E_{max}$	$E_{h\ m} / E_m$	H [m]	Camera
1	perpendicular	542	465	583	0.86	0.80	/	0.000	/

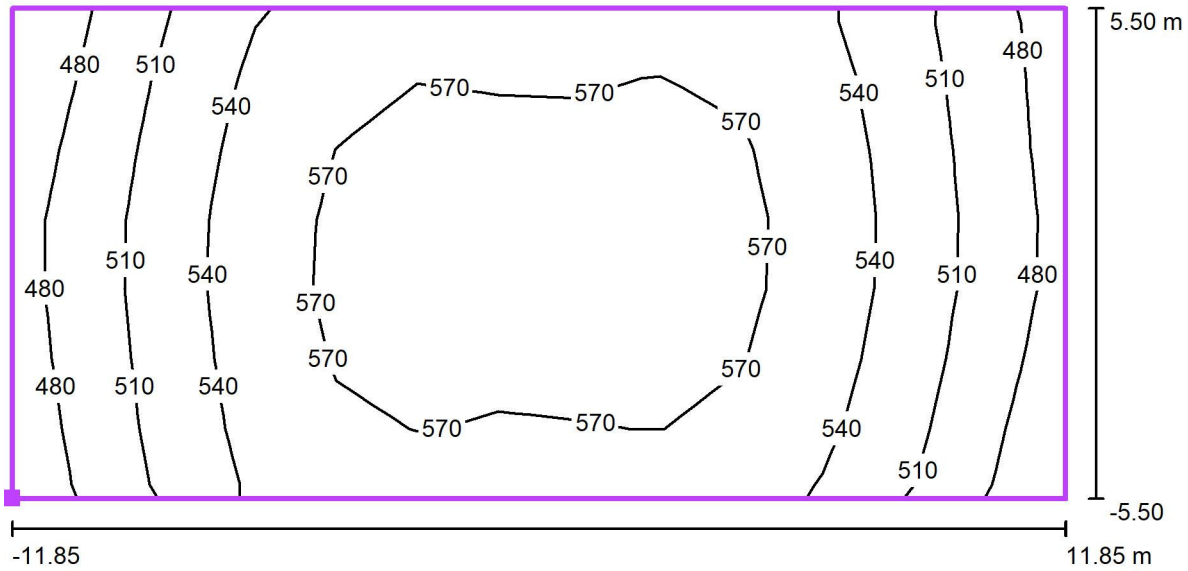
$E_{h\ m} / E_m$  = Relationship between middle horizontal and vertical illuminance, H = Measuring Height

POTECH POWER TECHNOLOGY LIMITED COMPANY

350/33/10/9B Quốc lộ 1, Khu phố 4, P. An Phú Đông, Q. 12, Tp. Hồ Chí Minh

Operator BUI CONG CUONG  
Telephone 0933207899  
Fax  
e-Mail potechled@gmail.com

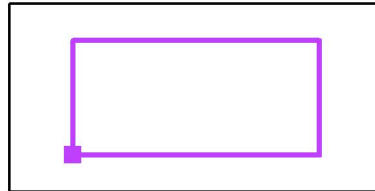
### Exterior Scene 1 / Calculation Grid 1 / Isolines (E, Perpendicular)



Values in Lux, Scale 1 : 170

Position of surface in external scene:

Marked point: (6.100 m, 3.500 m, 0.000 m)



Grid: 13 x 7 Points

$E_{av}$  [lx]  
542

$E_{min}$  [lx]  
465

$E_{max}$  [lx]  
583

$u_0$   
0.86

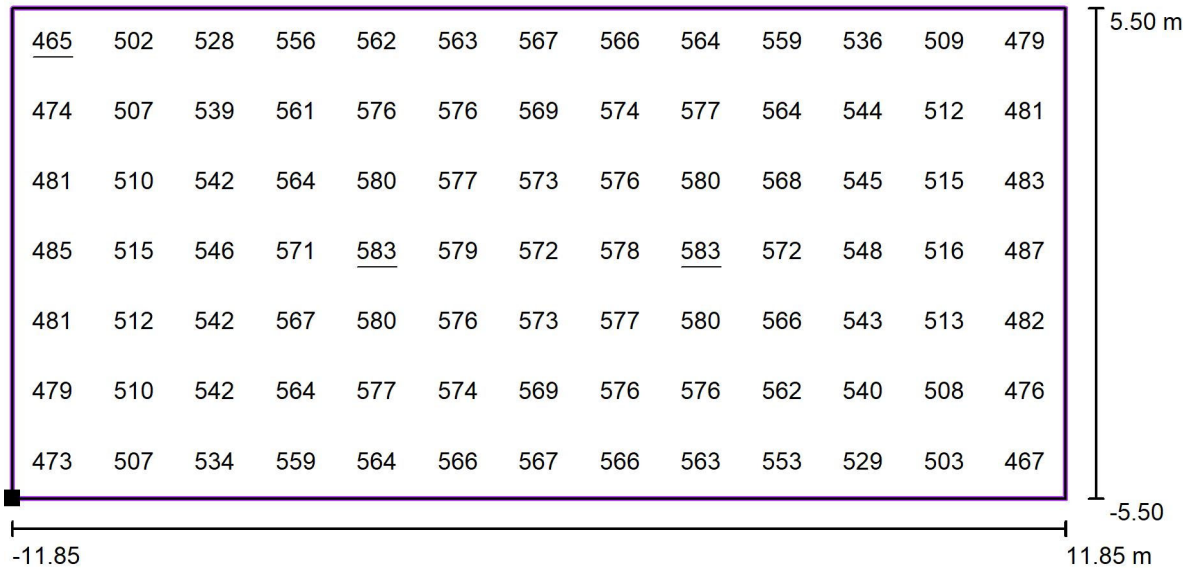
$E_{min} / E_{max}$   
0.80

POTECH POWER TECHNOLOGY LIMITED COMPANY

350/33/10/9B Quốc lộ 1, Khu phố 4, P. An Phú Đông, Q. 12, Tp. Hồ Chí Minh

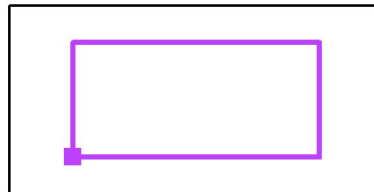
Operator BUI CONG CUONG  
Telephone 0933207899  
Fax  
e-Mail potechled@gmail.com

### Exterior Scene 1 / Calculation Grid 1 / Value Chart (E, Perpendicular)



Values in Lux, Scale 1 : 170

Position of surface in external scene:  
Marked point: (6.100 m, 3.500 m, 0.000 m)



Grid: 13 x 7 Points

$E_{av}$ [lx]	$E_{min}$ [lx]	$E_{max}$ [lx]	$u0$	$E_{min} / E_{max}$
542	465	583	0.86	0.80